

Tool & Product Update

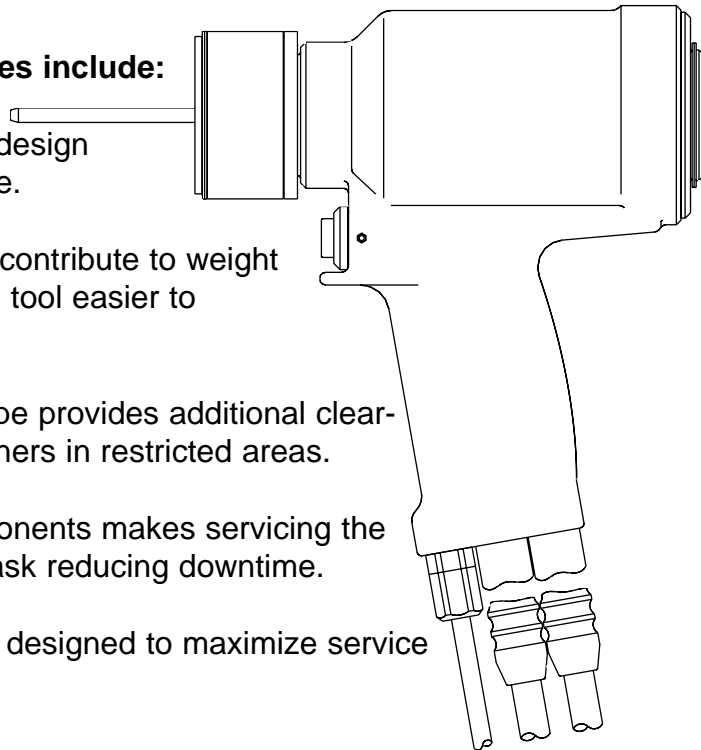
New Product Release 2620/2620-PT/2624 HYDRAULIC INSTALLATION TOOLING

INTRODUCING THE LIGHTWEIGHT ERGONOMIC TOOLING LINE FOR LARGE DIAMETER FASTENERS

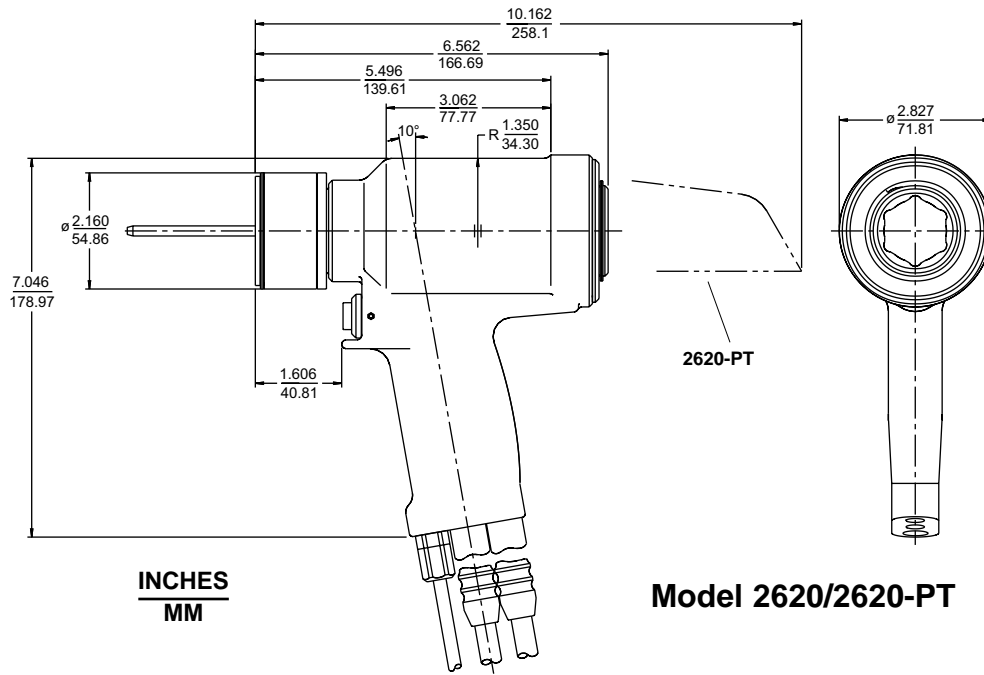
The 2620 tool is the new ½ " tool and replaces the current FE5901 tool. The pass through version 2620-PT replaces the standard 5901. The 2624 is a lightweight ergonomic alternative to the 585 or 586 tool for installing 5/8 " product. The new line of tooling is fully compatible with existing nose assemblies.

The 2620/24 Tool's features include:

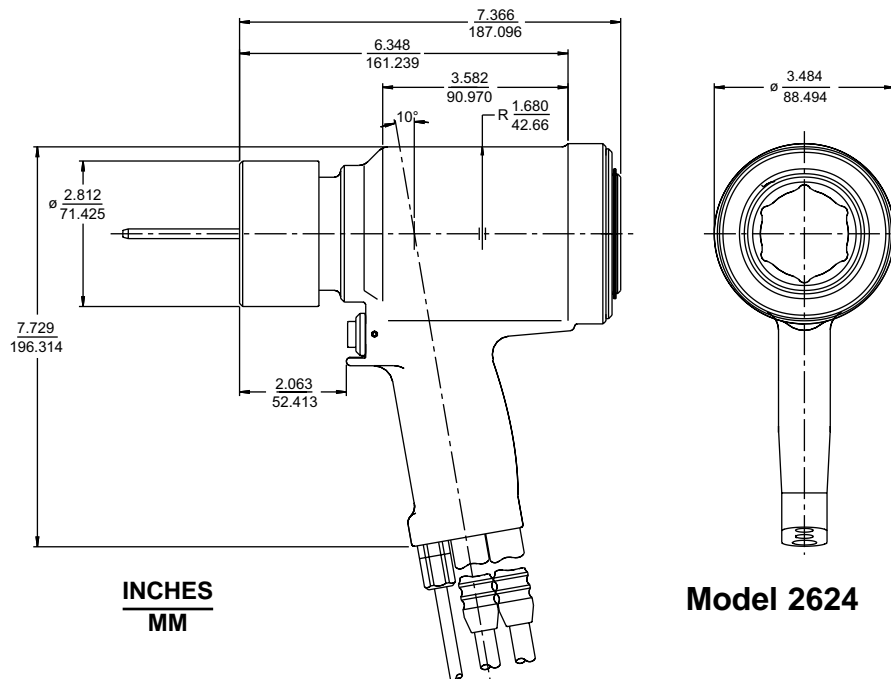
- Lightweight ergonomic design reduces operator fatigue.
- Lightweight hoses also contribute to weight reduction and make the tool easier to maneuver.
- Smaller exterior envelope provides additional clearance for installing fasteners in restricted areas.
- Design of interior components makes servicing the tool a quick and easy task reducing downtime.
- Sealing configuration is designed to maximize service intervals.



Tool Specificaton on back side....



- **Stroke:** 1.437in
- **Pull Pressure:** 7,400 psi
- **Capacity:** 17,745 lbs @ 6,500 psi
- **Weight:** 9 lbs 14oz
- **Return Pressure:** 3,200 psi
- **Noise Level:** 75 dBA



- **Stroke:** 1.687 in
- **Pull Pressure:** 7,400 psi
- **Capacity:** 30,356 lbs @ 6,500 psi
- **Weight:** 14 lbs
- **Return Pressure:** 3,200 psi
- **Noise Level:** 75 dBA